

Korea Institute of Child Care and Education
Diplomacy floor, 70, Sogong-ro, Jung-gu, Seoul, Republic of Korea(04535)
Tel 82 2 398 7700 Fax 82 2 398 7798 www.kicce.re.kr

Child Care and Education

Published in May, 2020 | Published by Sunhee Baek, Presidents of KICCE | Designed by YUWOLAE

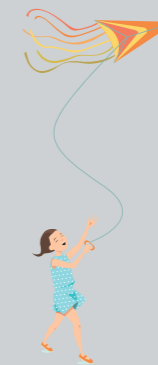
For happiness of children,
For happiness in raising children,
KICCE is with you!

Korea Institute of Child Care and Education



Every child has the right to be healthy and happy.

As a national research institute,
KICCE will endeavor to create a society in which
families, communities, enterprises and the nation
work together for happiness of children and
happiness in raising children.



Contents

- 04 Message from President
- 06 Vision and Mission of 2018~2020
- 08 History
- 10 Organization
- 12 Major Research Projects in 2020
- 14 Study with Public Participation•Social Contribution Activities
- 15 Domestic and International MOU from 2018 to 2020
- 16 Overseas Partners
- 17 Domestic Partners: KICCE ECEC Policy Research Ecosystem
- 18 Major Events in 2019
- 19 Major Events in 2020
- 20 Publications
- 21 Online Services
- 22 The New Beginning of KICCE at Myeong-dong
- 23 Epilogue



—
Message from President

Korea Institute of Child Care and Education(KICCE) is a government-funded research institute, affiliated with the National Research Council for Economics, Humanities and Social Sciences under the Prime Minister's Office. KICCE studies and develops early childhood education and care(ECEC) policies comprehensively and systematically.

KICCE was established in 2005 when Korea was suffering from the critical low fertility rate. Since then on, KICCE has greatly contributed to various areas such as child wellbeing, child-rearing culture and national policy development through a wide range of research, assessment and policy development on ECEC.

Our country has experienced lowest-low fertility rate for a long period of time. In 2018, total fertility rate declined to below 1.0 for the first time. We must consider the total fertility rate not as a 'quantitative indicator' of how many children are born, but as a 'qualitative indicator' that manifests how difficult it is to have and raise children in our society.

In this lowest-low fertility society, the paradigm of child care policy should exceed the current ECEC-oriented policy and transition to a comprehensive policy that creates a happy social environment for children and their caregivers. As a leading national research institute for ECEC policy in Korea, KICCE will carry out basic research and policy research with much raised social responsibility, in order to advocate children's rights, maintain work-family-life balance, and create a social environment suitable for having and raising children. Furthermore, KICCE will share the research outcomes with various stakeholders, such as the public, the field, academia, and the government.

For happiness of children, for happiness in raising children, KICCE is with you!

Your interest and support will be very much appreciated.

Thank you.

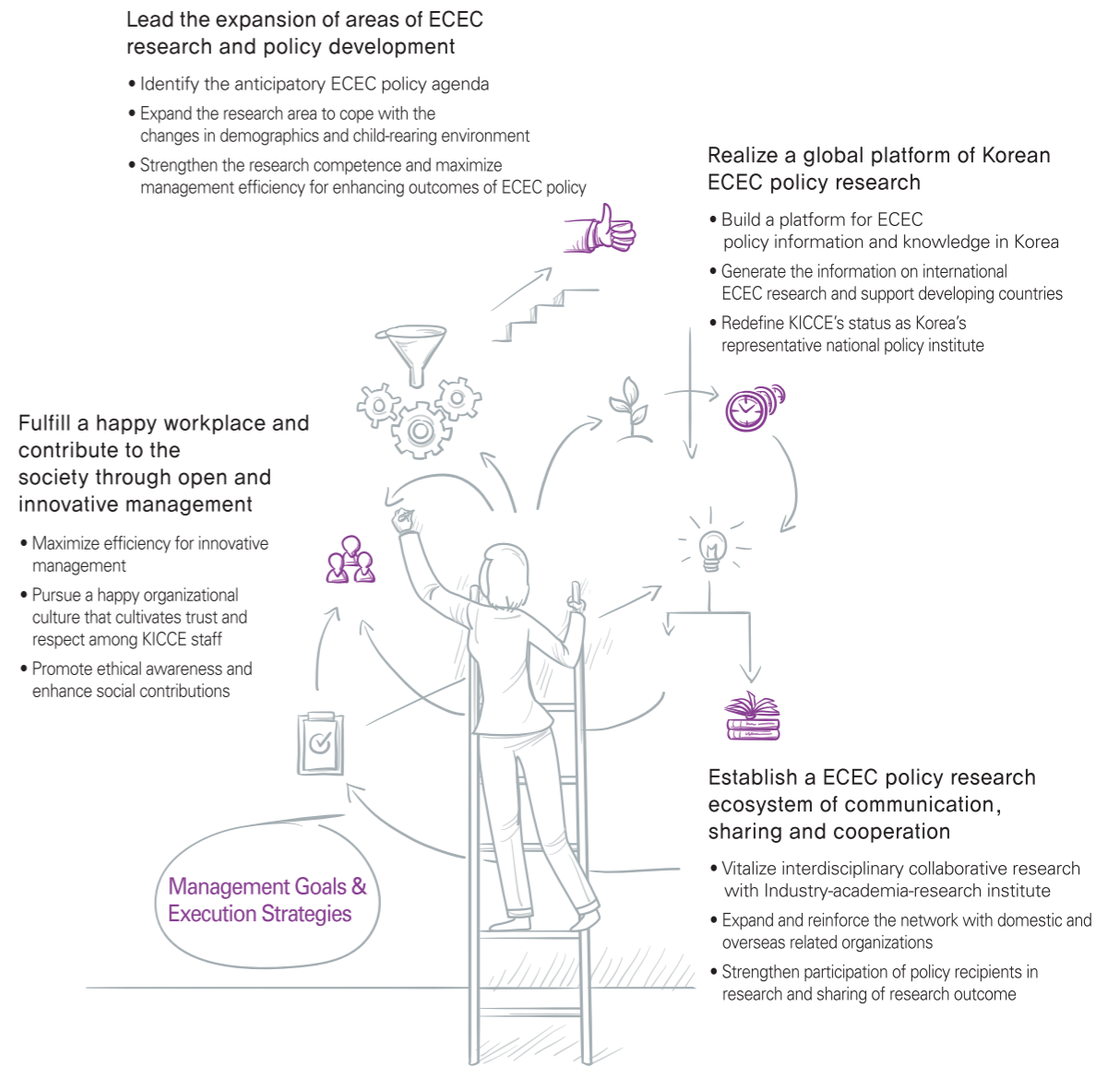
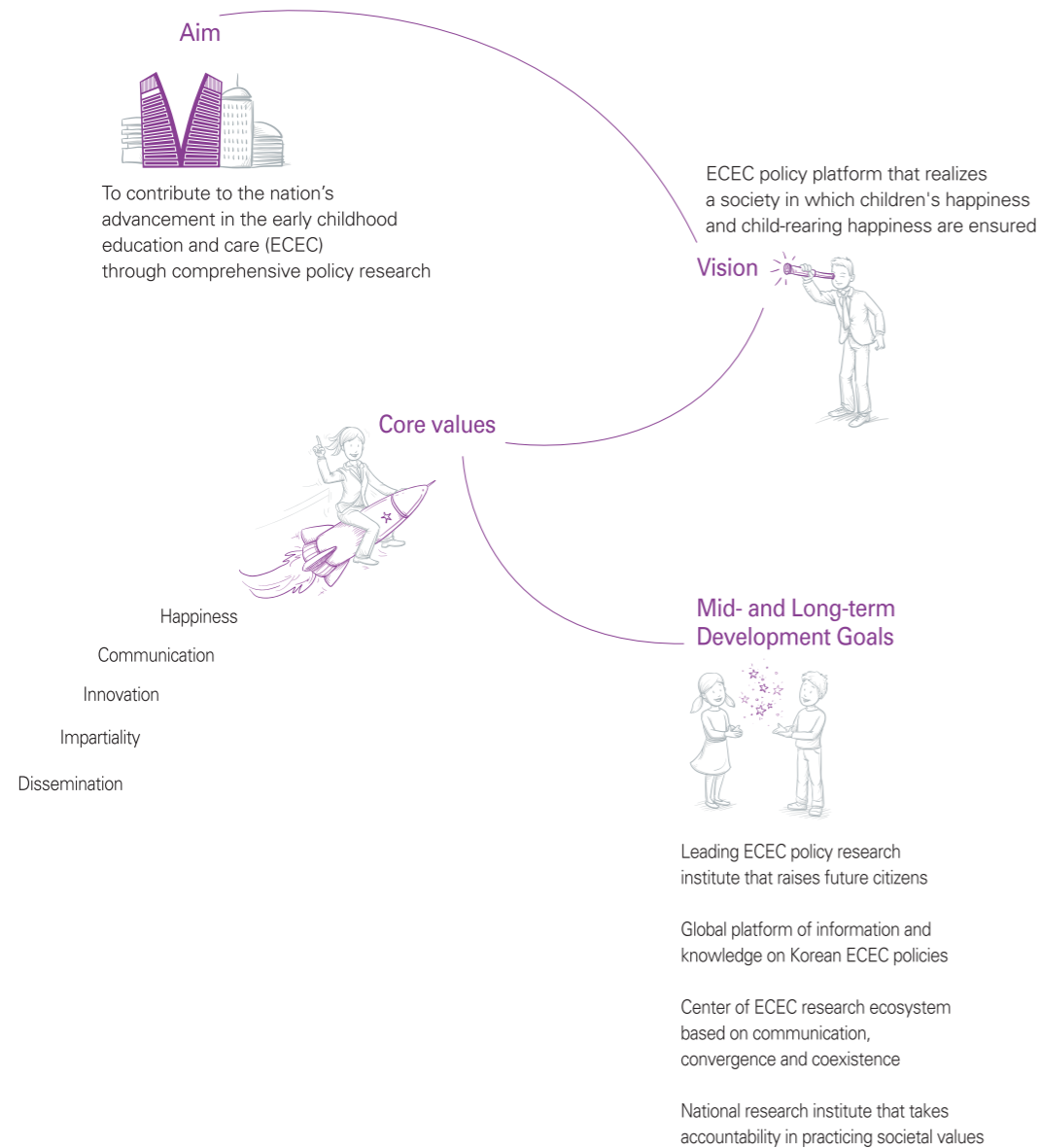
**For happiness of children,
for happiness in raising children,
KICCE is with you!**



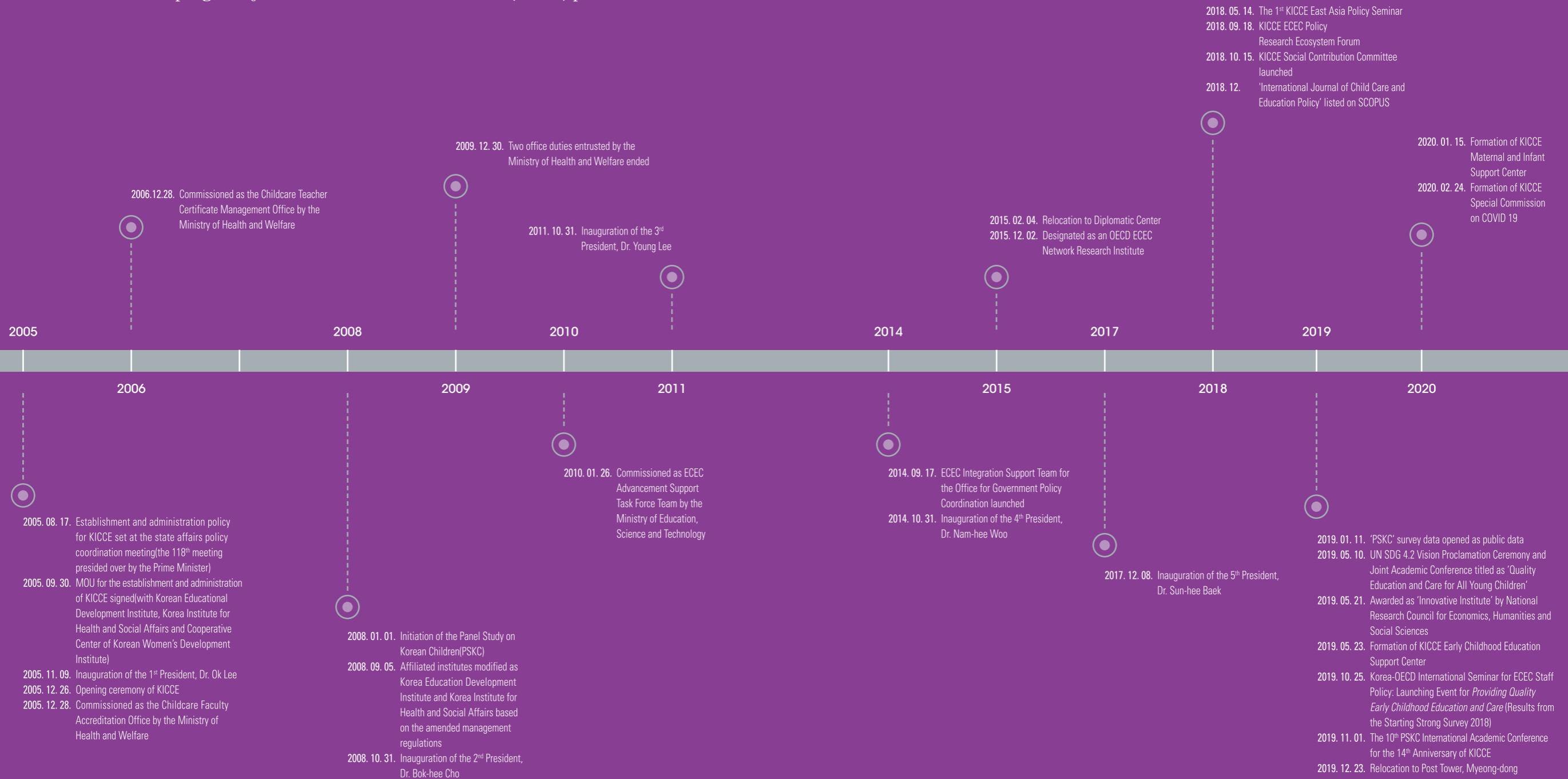
President of
Korea Institute of Child Care and Education

Back Sunhee

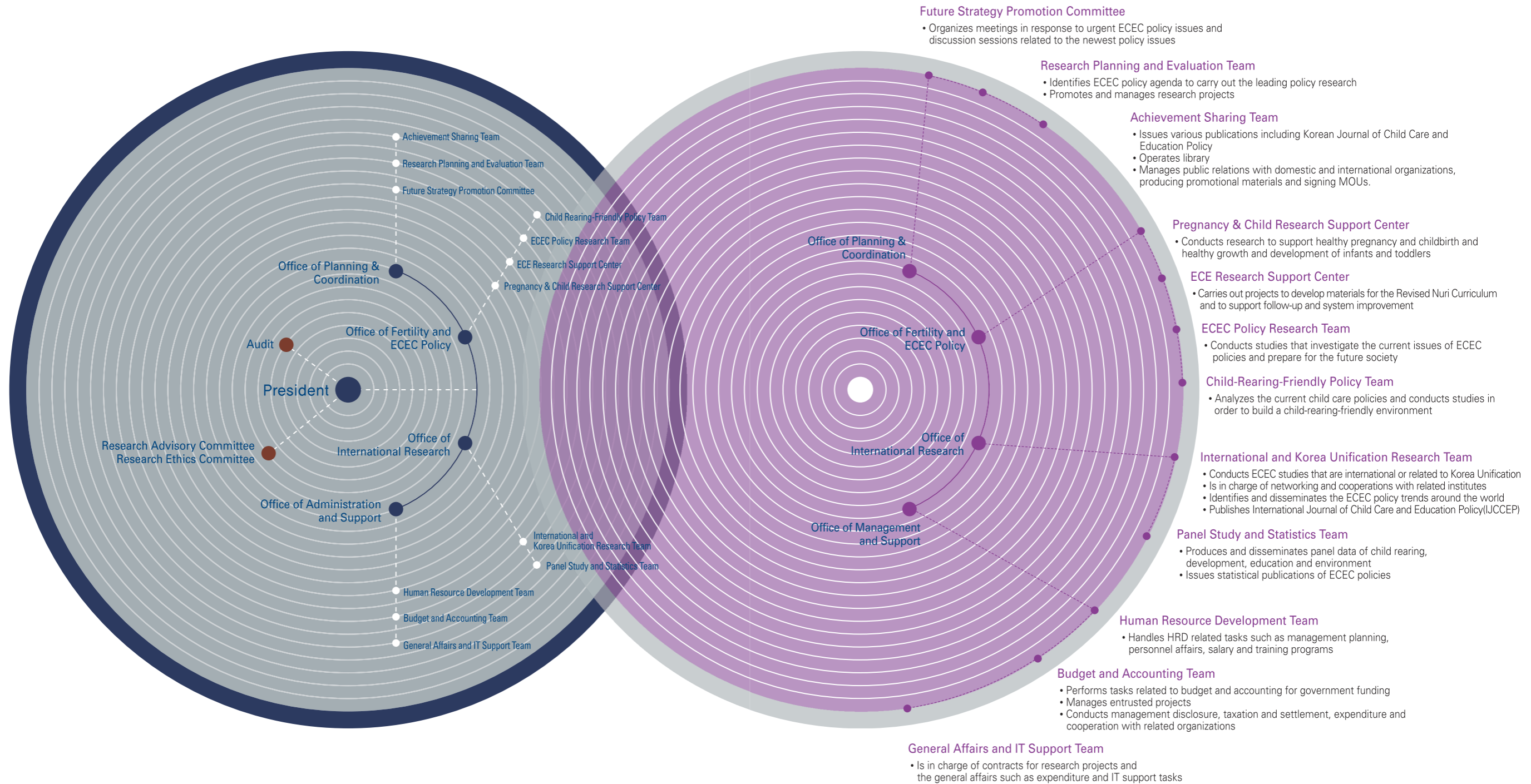
For happiness of children, for happiness in raising children,
KICCE is with you!



The following is the timeline of KICCE history since its inception in 2005. Today, KICCE is still writing a new history of its significant contribution that will make Korea one of the leading countries in developing early childhood care and education(ECEC) policies.



KICCE is building a happy workplace through open and ethical management for ECEC policy research and policy development to fulfill social values.



KICCE selects topics and conducts studies that contribute to the development of ECEC policies by analyzing and evaluating the policies and producing basic data for policy-making.

Major Projects

- Measures to Improve Childrearing Equity for Inclusive Society
- Plan for Reasonable Staff Placement at Childcare Centers to Ensure Working Hours
- A Study on Childrearing Support for Work-Life Balance of Dual Income Households
- A Study on the Improvement of Health Support Services for Mothers and Newborn
- A Comparative Study on Low Fertility Issues and ECEC Policies among East Asia Countries(Korea, China and Japan)(III): Policies to Create child-rearing Environment at Workplaces and in Society
- Analysis of ECEC Status of North Korea to Prepare for Korea's Unification
- Measures to Activate Childcare Economy from Gender Perspective
- Diagnosis of Social Conflicts in ECEC and Ways to Cope with Those Conflicts
- A Study on the Practice Plan for Sustainable Development Education in Early Childhood
- Research on the Cost Support and Sharing System Reorganization for Childcare Centers



Main Occasional Projects

- Investigation of Countermeasures of COVID 19 in Child Care Field and Support Measures for the Absence of Care
- Development of Mental Health Support Manual for Young Children to Overcome Crisis
- Study on the Childrearing Status of and Support Measures for Vulnerable North Korean Refugee Families with Single Parents
- Childcare Status and Demand of Multicultural Families
- White Paper for Childcare Policy Related to COVID 19



General Projects

- KICCE Poll for Establishing the Culture of Happy Childcare(IV)
- 2018~2022 Analyses and Projects on Child-rearing policy(III): 2019~2020 Child-rearing Outcome Analyses
- A Study on the Spending and Child-rearing Costs of Households with Young Children(III)
- A Study of the KICCE Child-rearing Price Index(CPI)(III)
- Effectiveness Analysis of Nuri Curriculum(III): Computerization and Field Application of KICCE Child Observation Scale
- A Study on Support Strategies for Child-rearing of Vulnerable Families(II): the Analyses on Child-rearing Status by Characteristics of Vulnerable Families
- A Study on Building Child-rearing-Friendly Villages for Overcoming Extremely Low Fertility Society(II): Customized Trial Diagnosis by Regions and Application of KICCE Child-rearing-Friendly Village Index
- A Study on Monitoring and Support Measures of 「2019 Revised Nuri Curriculum」 (I)
- Needs Assessment and Implementation Plan for ECCE Policy Development and Cooperation in the Asia-Pacific Region(III): Monitoring the Consulting Process and Outcome Analyses
- Development and Application of Evaluation-based CARE Consulting Model for Childcare Centers' Quality Monitoring(V): Evaluation-based Post-Consulting Pilot Project
- A Study on Paradigm Shift to Cultures with Respect for Child-rearing and Ways to Form Positive Child-rearing Perceptions(II): Creating Child-Rearing Respect Culture at Workplaces
- The Longitudinal Study on Growth and Development of Korean Children 2020(PSKC II)



Main Commissioned Projects

- [Ministry of Health and Welfare] Consulting Project for Quality Improvement of Postpartum Care Centers
- [Ministry of Health and Welfare] Study on Development of the 2020 Revised Standard Childcare Curriculum for Ages 0 to 2
- [17 Metropolitan and Provincial Offices of Education] Construction and Operation of 2020 Nuri Curriculum Portal
- [Chungnam Provincial Office] Measures to Create Childrearing Ecosystem in order to Make Chungnam a Childrearing-Friendly Place
- [Korea Institute for International Economic Policy] Response Strategies for China's Childrearing-Related Consumption Culture and Korea's Angel Industry

KICCE carries out research on various ECEC policies with government ministries including Ministry of Education, Ministry of Health and Welfare, Ministry of Gender Equality and Family, and Ministry of Employment and Labor, and international organizations.

Study with Public Participation•Social Contribution Activities

Study with Public Participation

KICCE makes ECEC policy research with people.

- Consultant group for postpartum care centers [Consulting Project for Postpartum Care Centers Evaluation]
- Creators for Childrearing Culture [A Study on a Paradigm Shift towards a Culture that Respects Parenting and for Raising Positive Awareness on Parenting Culture(I): Analysis and Issues of Parenting Culture]
- Trend Catchers of Childrearing Consumptions [A Study on the Spending and Childrearing Costs of Households with Young Children II]
- 100-Person Advisory Group [Development and Distribution of Commentary of the Revised Nuri Curriculum and Materials for Understanding and Executing Play]



Social Contribution Activities

KICCE creates and practices social values.

- Launched KICCE Social Contribution Committee [2018. 10. 15.]
- Participated in Special Programs of SBS Hope TV 'Korea, a Nation Good for Having Children' [2018, 2019]
- Hosted a Meeting to Invite Families of Migrant Background with Young Children [2019]
- Co-promoted Young Children Care Support Project with Hana Financial Group and Good Neighbors [2020]
- Co-promoted a Campaign for Improving Children's Right to Play, 'Play Together, Play is Valuable' [2020]
- Purchase goods from social enterprises. [Every Year]



Domestic and International MOU from 2018 to 2020



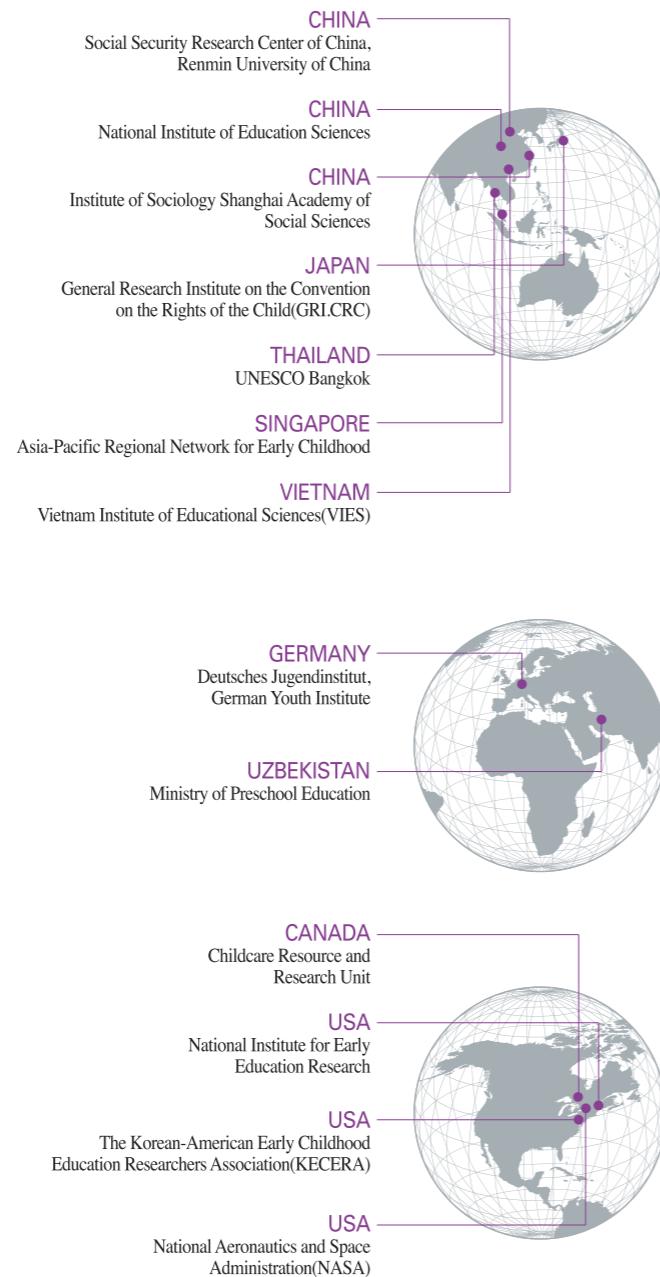
Overseas Partners

As the only ECEC policy research institute in Korea, KICCE has made international exchanges on policy research and childcare information through MOUs with various related institutions around the world.

Overseas ECEC policy network

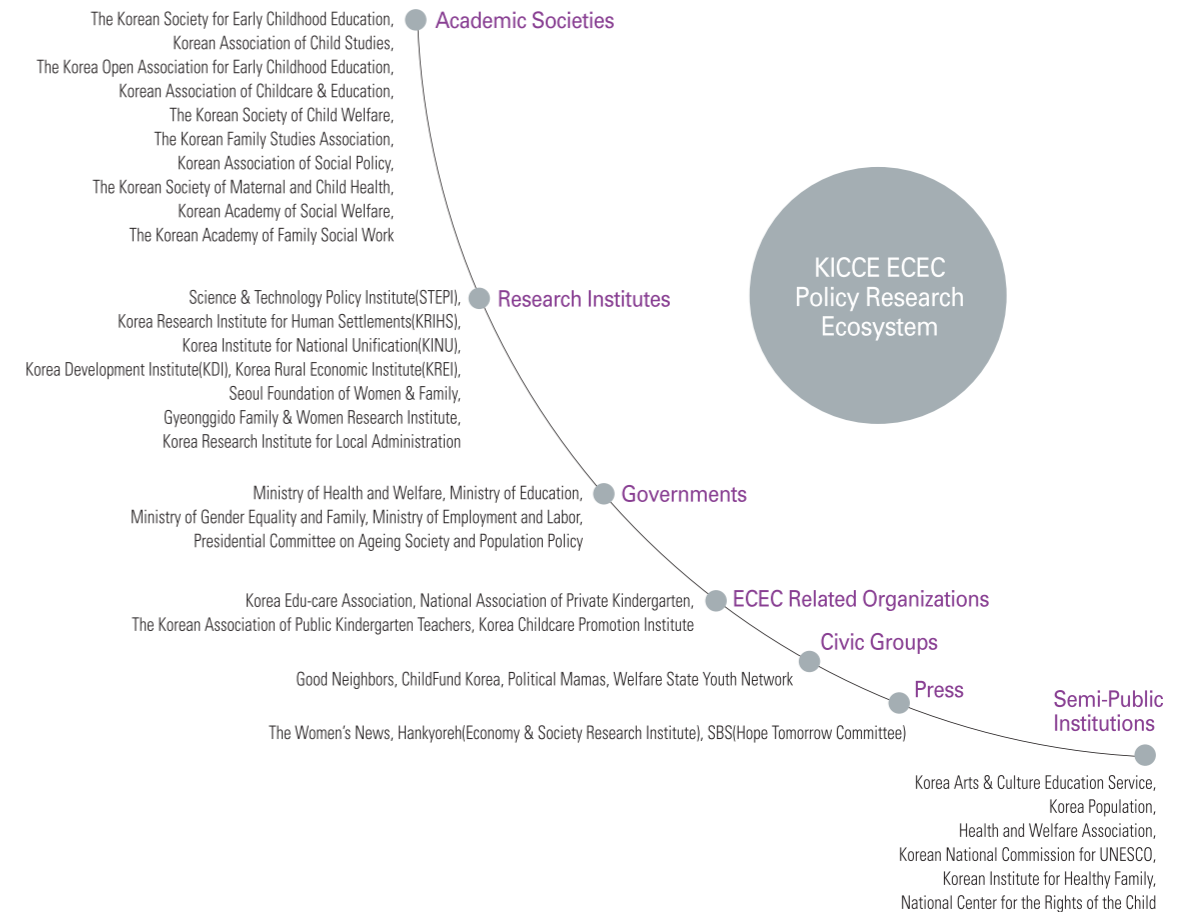
KICCE is actively engaged in international exchanges and academic activities by establishing networks with related institutions and international organizations in various countries around the world.

- **International organizations** | OECD, UNESCO, UNICEF, World Bank, EU etc.
- **Government departments** | UZBEKISTAN Ministry of Preschool Education of the Republic of Uzbekistan
- **Policy research institutes** | U.S. National Institute for Early Education Research, National Aeronautics and Space Administration, CANADA Childcare Resource and Research Unit, GERMANY State Institute of Early Childhood Research, Deutsches Jugendinstitut, HUNGARY National Institute for Family and Social, SINGAPORE National Institute of Education, Early Childhood Development Agency, CHINA National Institute for Education Sciences of China, CHINA Social Security Research Center of China, Renmin University of China, CHINA Institute of Sociology Shanghai Academy of Social Sciences, JAPAN General Research Institute on the Convention on the Rights of the Child, VIETNAM Vietnam Institute of Educational Sciences
- **Information centers** | U.S. Education Resources Information Center for Early Childhood Education, U.S. National Child Care Information Center
- **Organizations** | AUSTRALIA National Childcare Accreditation Council etc.
- **Academic societies / Associations** | Asia-Pacific Regional Network for Early Childhood, Pacific Early Childhood Education Research Association, The Korean-American Early Childhood Education Researchers Association, European Early Childhood Education Research Association, Organisation Mondiale Pour L'Education Prescolaire etc.



Domestic Partners: KICCE ECEC Policy Research Ecosystem

KICCE has operated “KICCE ECEC Policy Research Ecosystem” composed of various organizations including local governments, research institutes and civil society organizations in order to develop leading ECEC policies, build an interdisciplinary research base for creating synergy, and find preemptive ECEC policy issues.



Major Events in 2019

Jointly held ECEC Policy Symposium



Jointly held KICCE East Asia Policy Seminar



KICCE ECEC Policy Research Ecosystem Forum



KAL(KICCE Active Listening) Field Meeting



UN SDG 4.2 Vision Proclamation Ceremony and Joint Academic Conference



Jointly held the 15th Social Security International Academic Conference



The 10th PSKC International Academic Conference



Jointly held International Conference on Values of Care Work and Social Inclusion



Jointly held the 2nd KICCE Policy Seminar on Early Childhood Policy Development Cooperation in the Asia-Pacific Region



Lowest-Low Fertility Society, ECEC Policy Forum for Inclusive Welfare State



Jointly held 2019 Korea's National Vision Meeting(II)



Major Events in 2020

KICCE holds a variety of academic events in order to communicate with the public, disseminate research outcomes, and to lead ECEC policy domestically and internationally.



ECEC Policy Symposium

ECEC Policy Symposium is a major academic event for drawing policy alternatives through discussion with experts in and out of KICCE on main issues of ECEC.

11th Panel Study on Korean Children Conference

As part of PSKC, a representative longitudinal study of KICCE, an international conference will be held in September, 2020.

2020 ECEC Policy Forum for Inclusive Welfare State

KICCE has operated 'ECEC Policy Forum for Inclusive Welfare State' with professionals of health and welfare, housing, social welfare, labor market, and women's policies in order to create a new ECEC policy paradigm by forming discourses from a multidisciplinary perspective. In 2020, the forum will continue to discuss the directions and tasks of ECEC policies from a inclusive welfare state perspective.

KICCE ECEC Policy Research Ecosystem Forum

The KICCE ECEC Policy Research Ecosystem, composed of various related organizations, aims to develop leading ECEC policies through interdisciplinary research base and to build a cooperation system among industries, universities and institutes for creating synergy. Forums will be held in the first and second half of 2020.

KICCE East Asia ECEC Policy Seminar

In 2019, KICCE held a total of 3 KICCE East Asia ECEC Policy Seminars with National Assembly and academic societies. In 2020, further joint research projects, policy seminars, academic events will be carried out through continuous networkings.

KAL(KICCE Active Listening) Open Debates

The open debate is held in order to actively listen to expectations and demands for ECEC policies from various groups in order to fulfill the duties as a national research institute for young children and their parents.

KAL(KICCE Active Listening) Child-rearing Site Visit Meetings

The meetings are held in order to actively listen to various groups who have difficulties in raising children by visiting them and to reflect findings on policies.

Publications

KICCE issues a wide range of publications to disseminate and share its research outcomes.

| | |
|--|---|
| <p style="text-align: center;"> Research Report</p> <p>It contains research findings to support reasonable government policies in early childhood education and care. There are major, general, occasional, development reserve and entrusted research projects.</p> | <p style="text-align: center;"> International Journal of Child Care and Education Policy</p> <p>This is the SCOPUS-listed international journal about ECEC policies jointly published by KICCE and the National Institute for Early Education Research(NIEER). The published articles are openly accessible online(https://ijccep.springeropen.com).</p> |
| <p style="text-align: center;"> Korean Journal of Child Care and Education Policy</p> <p>It is the only journal of ECEC policy research in Korea and a journal registered in National Research Foundation of Korea. It is published three times a year.</p> | <p style="text-align: center;"> KICCE Policy Brief</p> <p>The brief is published in English in order to promote the latest ECEC and parenting policy trends in Korea for the foreign professionals and stakeholders.</p> |
| <p style="text-align: center;"> ECEC Policy Brief</p> <p>It provides analysis and realistic policy suggestions on key issues of ECEC and parenting policies. It is published occasionally and is easily accessible for the general public and professionals.</p> | <p style="text-align: center;"> International Trends and Issues in ECEC policies</p> <p>The series collects the trends related to ECEC policies in major countries in the world. A total of 25 volumes have been published including Japan(I,II,III), Sweden(I,II), Australia(I,II), U.K.(I,II), U.S., Canada, Finland(I,II), France, New Zealand, Taiwan, Norway, Islands, Israel, Netherlands, Denmark, Italia, China and Germany(I,II).</p> |
| <p style="text-align: center;"> Issue Paper</p> <p>It is a policy analysis issue magazine that analyzes the current ECEC policies and parenting and presents the policy suggestions.</p> | <p style="text-align: center;"> Major ECEC Statistics</p> <p>It is a collection of data and analyses of annual trends based on national statistical data and is published once a year.</p> |
| <p style="text-align: center;"> KICCE Policy Forum on ECEC</p> <p>It is a quarterly magazine composed of 'Policy Focus,' which analyzes the current issues related to ECEC policies and 'Policy Trends,' which includes domestic and foreign trends of ECEC policies.</p> | <p style="text-align: center;"> Card News</p> <p>It is a promotional medium created to share research findings on ECEC policies and child development to the general public in easier and relatable manners.</p> |
| <p style="text-align: center;"> Annual Paper</p> <p>It introduces research findings and major activities of KICCE in the previous year.</p> | <p style="text-align: center;"> Video Report</p> <p>It is a promotional video created with infographics and materials from policy research reports.</p> |
| <p style="text-align: center;"> KICCE News Letter</p> <p>The 「e-News Letter」, which distributes various news of KICCE online every month, promotes a research report that is most exposed to the media and introduces the recent publications, press reports, events and overseas ECEC policy trends of the month.</p> | |

Online Services

KICCE operates various online channels to share useful information.

KICCE Websites

Webpage: <http://www.kicce.re.kr>

Mobile webpage: <http://www.kicce.re.kr/mobile>

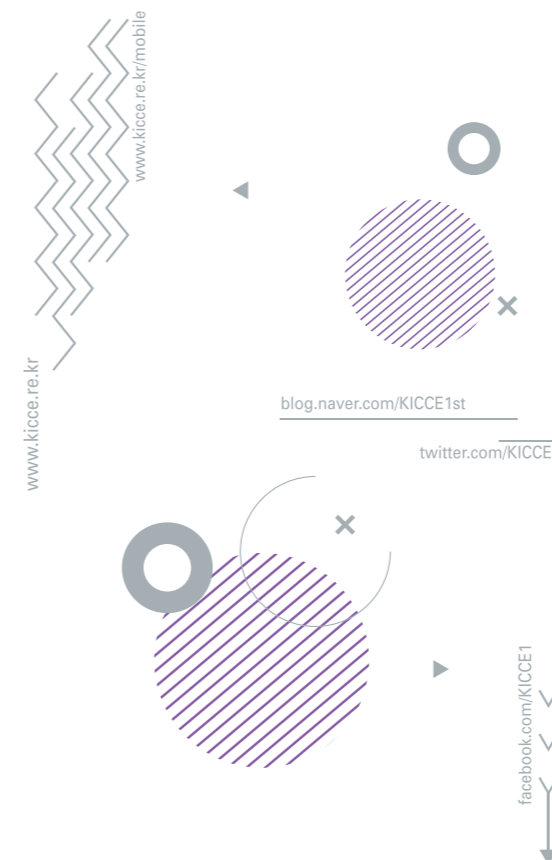
YouTube: <http://bitly.kr/kicce>

Blog: <https://blog.naver.com/kicce1st>

Twitter: <https://twitter.com/KICCE2>

Facebook: <https://www.facebook.com/KICCE1>

You may be updated on the latest news of the institute and the trends of ECEC policies via SNS.



Family Websites

KICCE Library

<http://lib.kicce.re.kr>

As Korea's only library specialized in ECEC policy in Korea, it holds research publications, related books and periodicals. You may search the library materials through the electronic library system.

KICCE POLL

<http://ipol.kicce.re.kr>

The I-POL project, which means 'policy' and 'information' for children, ended in 2015. Since 2017, a new project called KICCE POLL was initiated as a two-way communication channel with policy consumers, open to anyone's suggestions and opinions on the website.

Panel Study on Korean Children(PSKC)

<http://panel.kicce.re.kr>

PSKC is a longitudinal study on Korean children from birth to later development, which investigates developmental needs, parents' psychological traits, child-rearing status and child-rearing support's functions and effects in each developmental stage. You may download the panel data free of charge on the website.

Korean Journal of Child Care and Education Policy
<https://kicce.jams.or.kr>

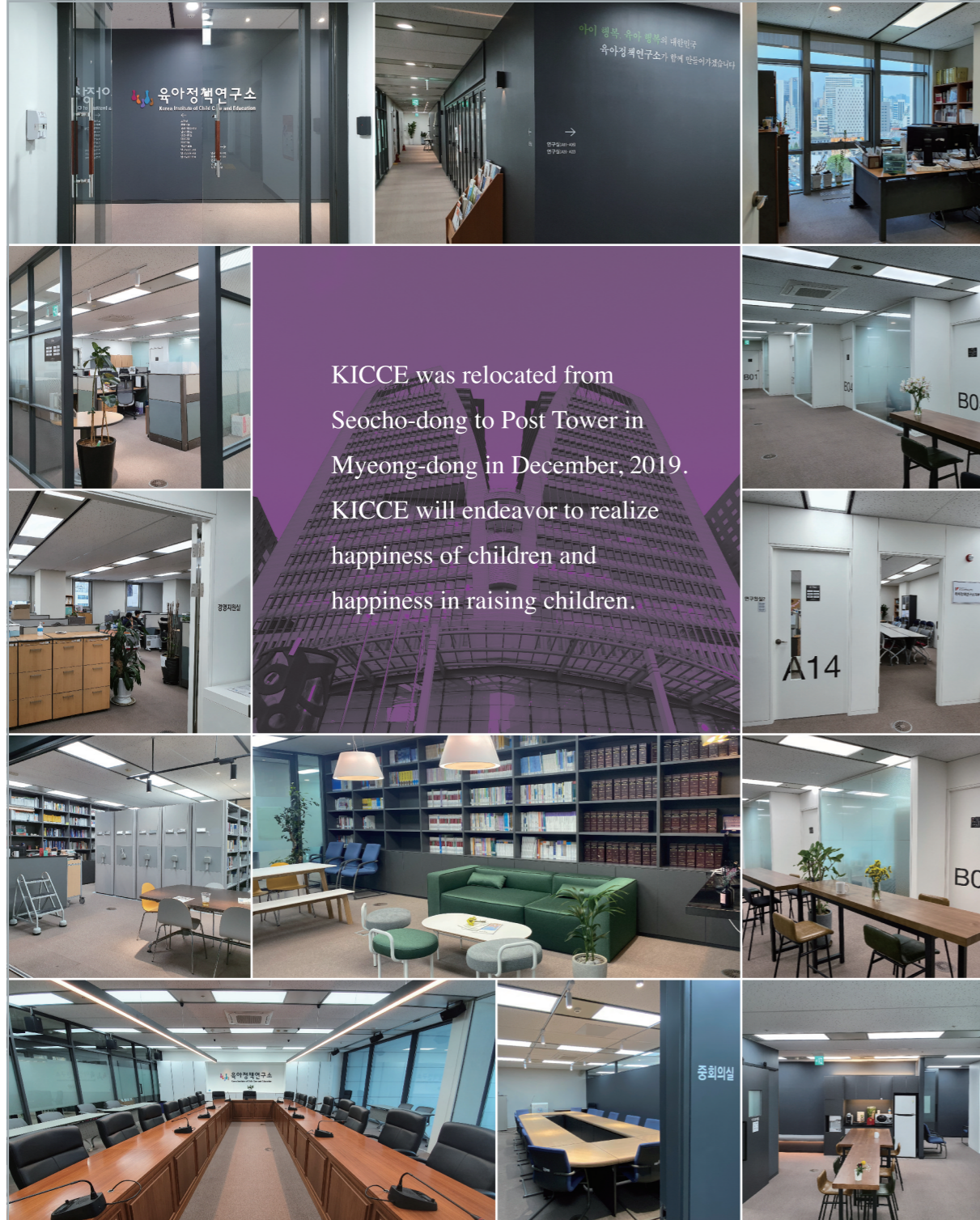
The website includes online thesis submission and screening system for 「Korean Journal of Child Care and Education Policy」. You may sign up as a member and submit your paper online.

International Journal of Child Care and Education Policy

<https://ijccep.springeropen.com>

The website includes online thesis submission and screening system for 「International Journal of Child Care and Education Policy」. You may submit your paper and download these free of charge online.

The New Beginning of KICCE at Myeongdong Post Tower from 2020



Epilogue



KICCE will do its best to become a platform for ECEC policies of the future society through “responsibility” as a national research institute, high level of public “ethical awareness” and “communication and cooperation” inside and outside of the institute.